

**ORDINANCE NO. 332**

**AN ORDINANCE OF THE CITY OF PORT ST. JOE AMENDING SECTION 70-190 OF THE CODE OF THE CITY OF PORT ST. JOE PERTAINING TO THE SEWER RATE SCHEDULE, BY AMENDING THE CHARGE BY THE CITY FOR SEWER; PROVIDING FOR THE REPEAL OF ALL ORDINANCES OR PARTS OF ORDINANCES IN CONFLICT HEREWITH AND PROVIDING FOR AN EFFECTIVE DATE.**

**BE IT ENACTED BY THE PEOPLE OF THE CITY OF PORT ST. JOE, FLORIDA:**

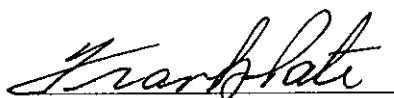
1. Section 70.190 of the Code of Ordinances of the City of Port St. Joe, currently reads as follows:
  - A. The City shall charge and collect from each sewer connection to be the sewer line within the corporate limits of the city the following rates: One hundred twenty percent (120%) of the amount of the charge for water made to each consumer during the same month.
  - B. The minimum charge for all sewer connections shall be \$6.00 per month.
  - C. The city shall charge and collect for each sewer connection to the sewer line outside the corporate limits of the city the following rates: as stated in executed agreements or 140% more than city residents or the rate allowed by Florida Statutes whichever is the lessor.
  - D. The minimum charge for all county sewer connections shall be based on 4,000 gallons of water or \$16.80 per month.
  
2. Section 70.190 of the Code of Ordinances of the City of Port St. Joe is hereby amended to read as follows:
  - A. The City shall charge and collect for all sewer connections within the corporate limits of the city the following rates: Flat rate, per 1000 gallons, or part thereof, for all sewer treated: \$3.50 per 1,000.
  - B. The minimum charge for all sewer connections within the corporate limits of the city shall be \$7.00 per month.
  - C. The city shall charge and collect for each sewer connection to the sewer line outside the corporate limits of the city the following rates: as stated in executed agreements or 125% more than city residents or the rate allowed by Florida Statutes, whichever is less.
  - D. The minimum charge for all county sewer connections shall be based on 4,000 gallons of water or \$17.50 per month.

**REPEAL:** All ordinances or parts of ordinances in conflict herewith are hereby repealed.

**EFFECTIVE DATE:** This Ordinance shall become effective upon adoption as provided by law.

**THIS ORDINANCE ADOPTED** this 4th day of October, 2005.

**BOARD OF CITY COMMISSIONERS**

  
\_\_\_\_\_

Mayor-Commissioner

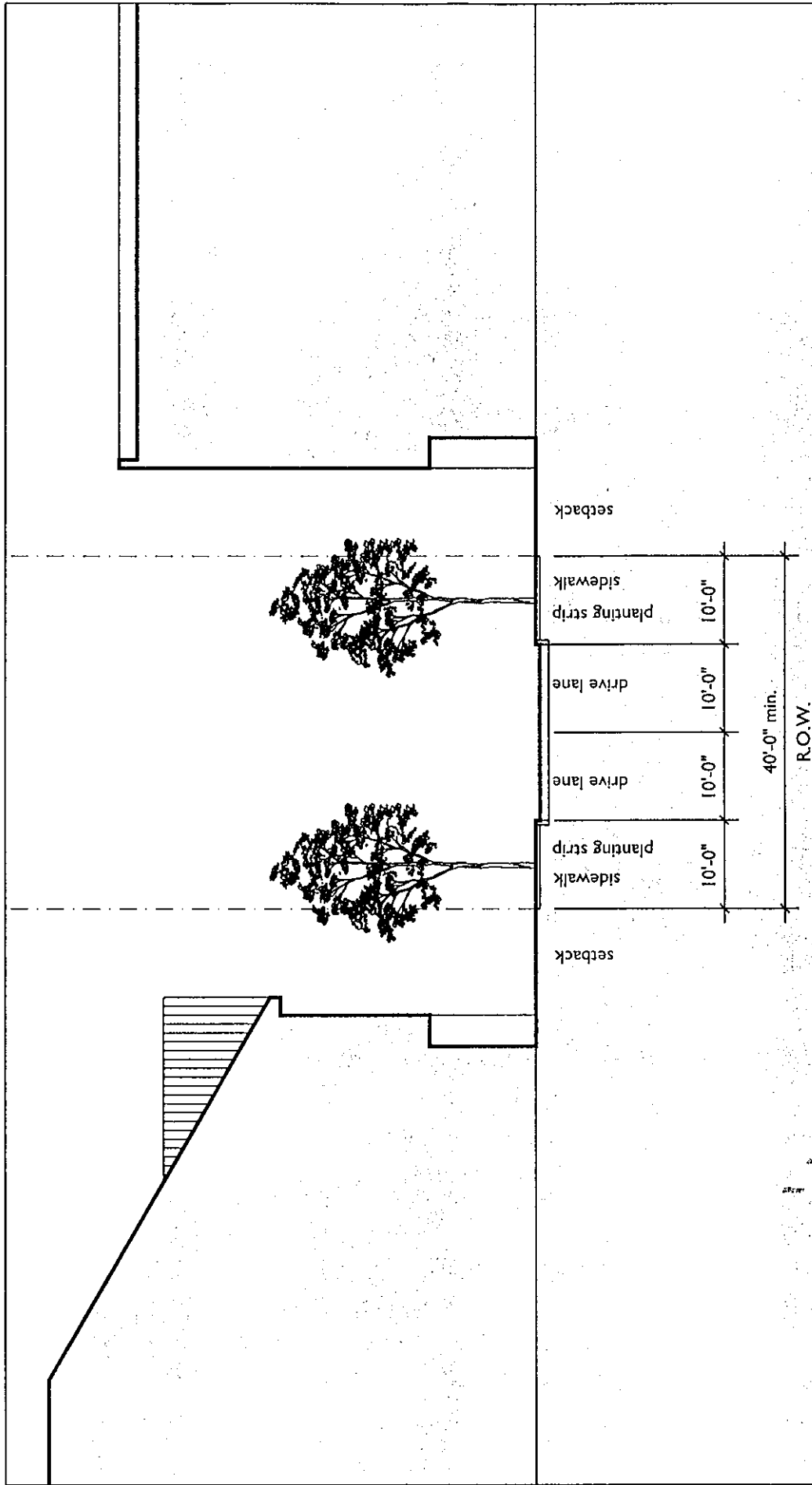
ATTEST

  
\_\_\_\_\_  
City Clerk

**EXHIBIT "B"**

**(Road Right of Way dimensions)**

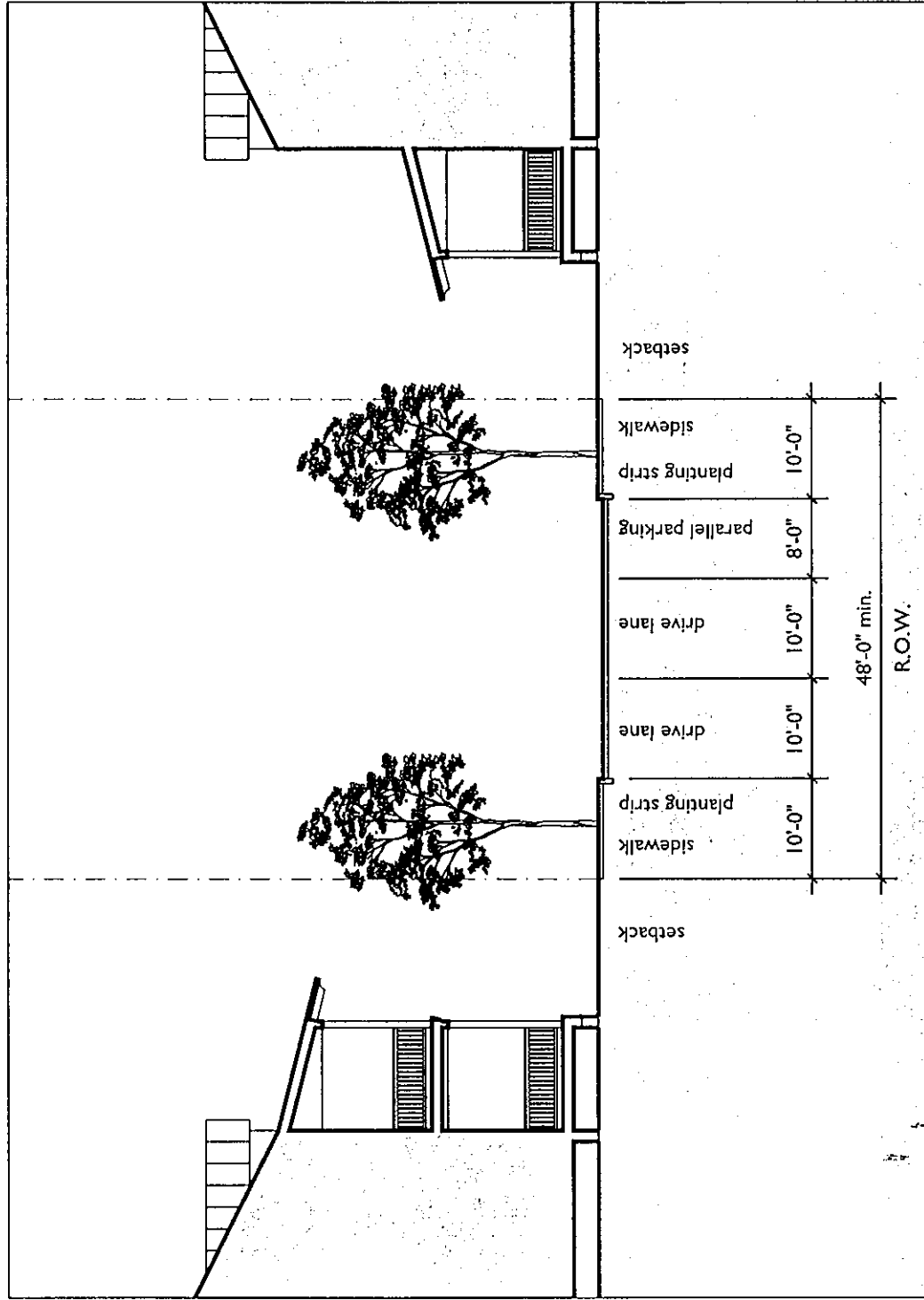
Exhibit B-1



Typical Street R.O.W. - No Parking  
**Town Center** - Port St. Joe, Florida

Not to Scale

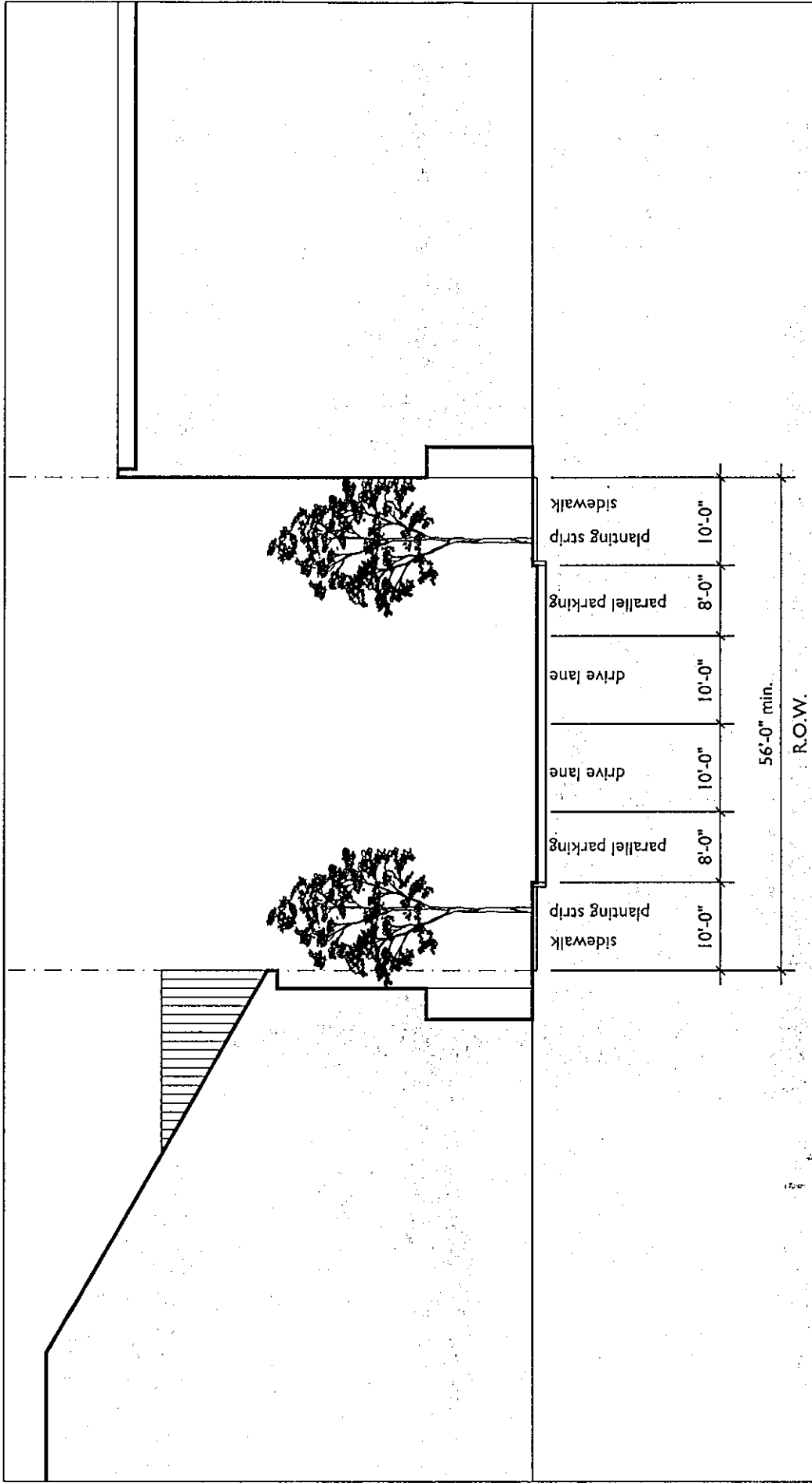
**Exhibit B-2**



**Typical Street R.O.W. - Single Parking  
Town Center - Port St. Joe, Florida**

Not to Scale

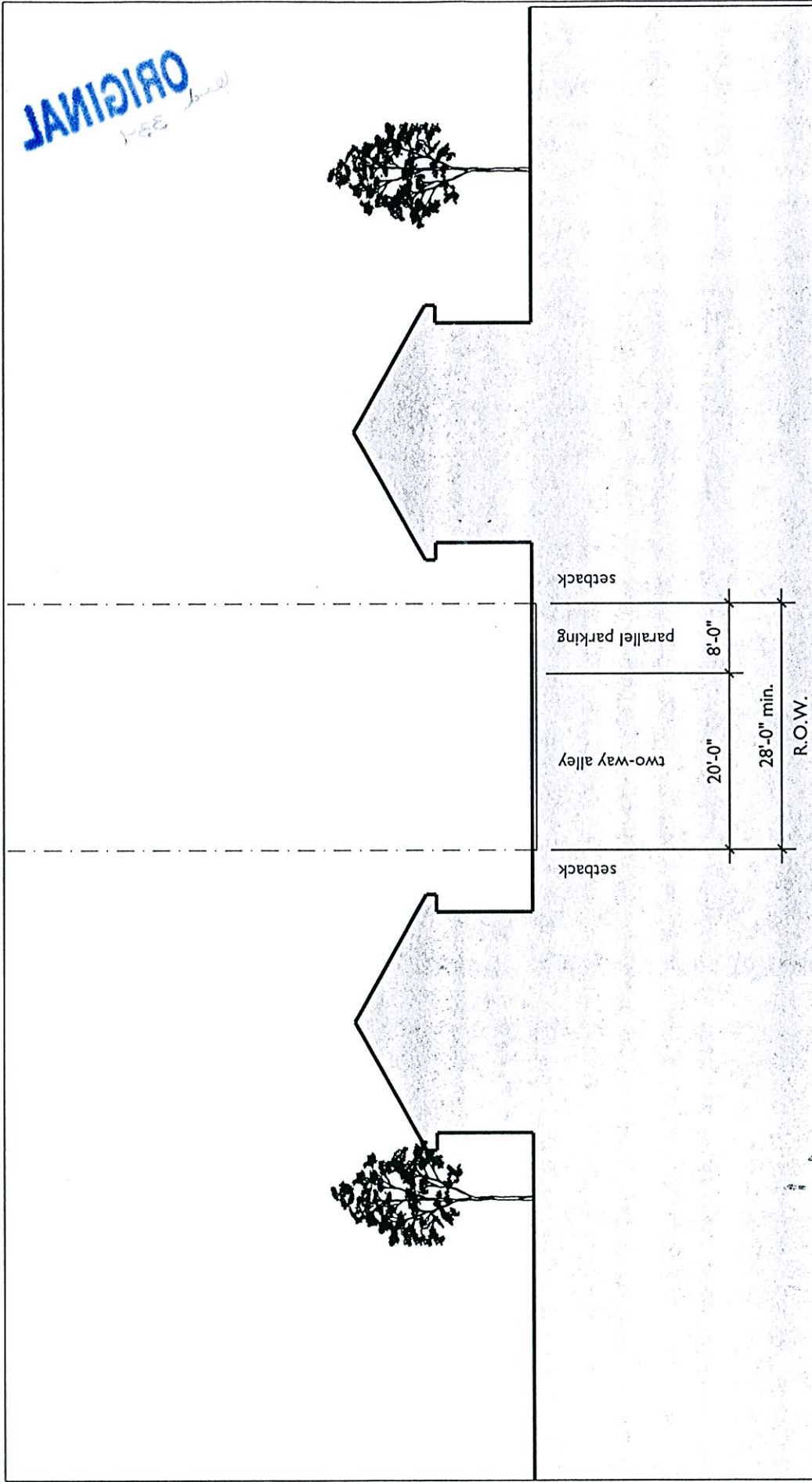
**Exhibit B-3**



Typical Street R.O.W. - Double Parking  
**Town Center - Port St. Joe, Florida**

Not to Scale

Exhibit B-4



Typical Alley R.O.W. - Single Parking  
Town Center - Port St. Joe, Florida

Not to Scale