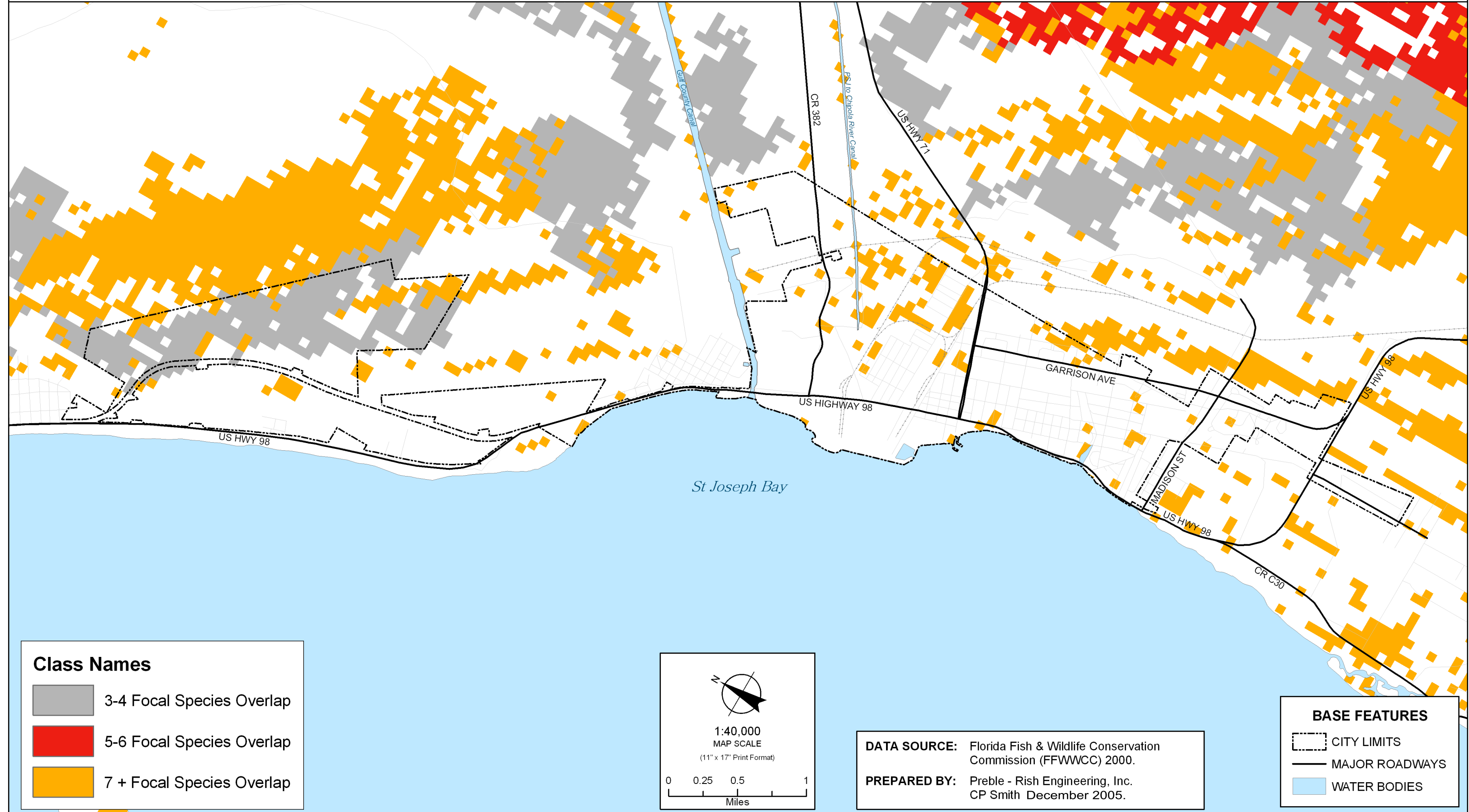



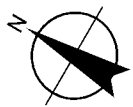
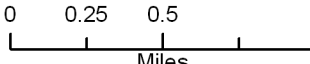


# BIODIVERSITY HOTSPOTS






**Class Names**

-  3-4 Focal Species Overlap
-  5-6 Focal Species Overlap
-  7 + Focal Species Overlap

  
**1:40,000**  
MAP SCALE  
(11" x 17" Print Format)  
  
0 0.25 0.5 1  
Miles

**DATA SOURCE:** Florida Fish & Wildlife Conservation Commission (FFWWCC) 2000.  
**PREPARED BY:** Preble - Rish Engineering, Inc. CP Smith December 2005.

**BASE FEATURES**

-  CITY LIMITS
-  MAJOR ROADWAYS
-  WATER BODIES