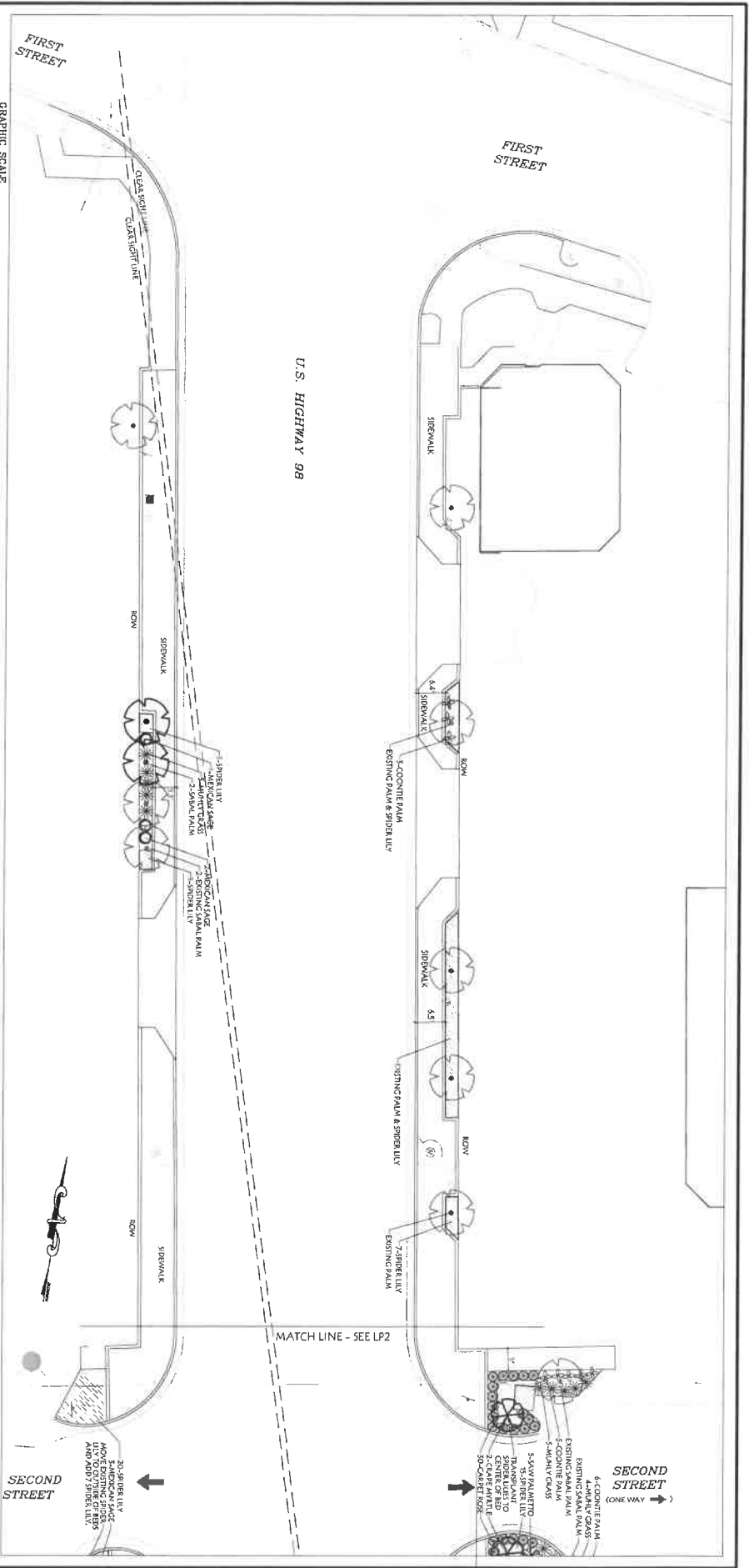


LANDSCAPE PLAN: HWY 98
1st Street - HWY 71
CITY OF PORT ST. JOE, FLORIDA
AUGUST 23, 2024

- SHEET INDEX:
- LP1: 1st Street - 2nd Street
 - LP2: 2nd Street - mid block between 2nd & 3rd Streets
 - LP3: Mid block between 2nd & 3rd Streets - 3rd Street
 - LP4: 3rd Street - 4th Street
 - LP5: 4th Street - mid block between 4th & HWY 71 (5th St.)
 - LP6: Mid block between 4th & HWY 71 - HWY 71 (5th St.)

Prepared By:
Coastal Design & Landscape, Inc.
1151 Industrial Road • Port St. Joe, Florida 32456
Phone (850) 229-8880





PLANT SCHEDULE

QTY	BOTANICAL NAME	COMMON NAME	SIZE / SPACING
15	Leptochloa nodosa	Nodosa	30" dia., 6" ft.
15	Stenandrium	Sword Palm	18" C.T. Spacing
147	Hydrocotyle	Spider Lily	1" dia./2' o.c.
30	Muhlenbergia capillaris	White Grass	1" dia./3' o.c.
30	Redtop	Redtop	1" dia./3' o.c.
30	Redtop	Redtop	1" dia./3' o.c.
5	Stenandrium	Sword Palm	18" C.T. Spacing
24	Zamia pumila	Coastal Palm	7" dia./3' o.c.

*Quantity may vary - Heavily Existing Spider Lilies Shall Be Relined or Transplanted.
Supplement As Needed.

DATE: 5/20/2024
 DESIGN DATE: 5/20/2024
 REVISION DATE: 5/20/2024
 SCALE: 1"=30'

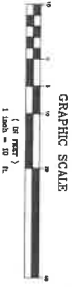
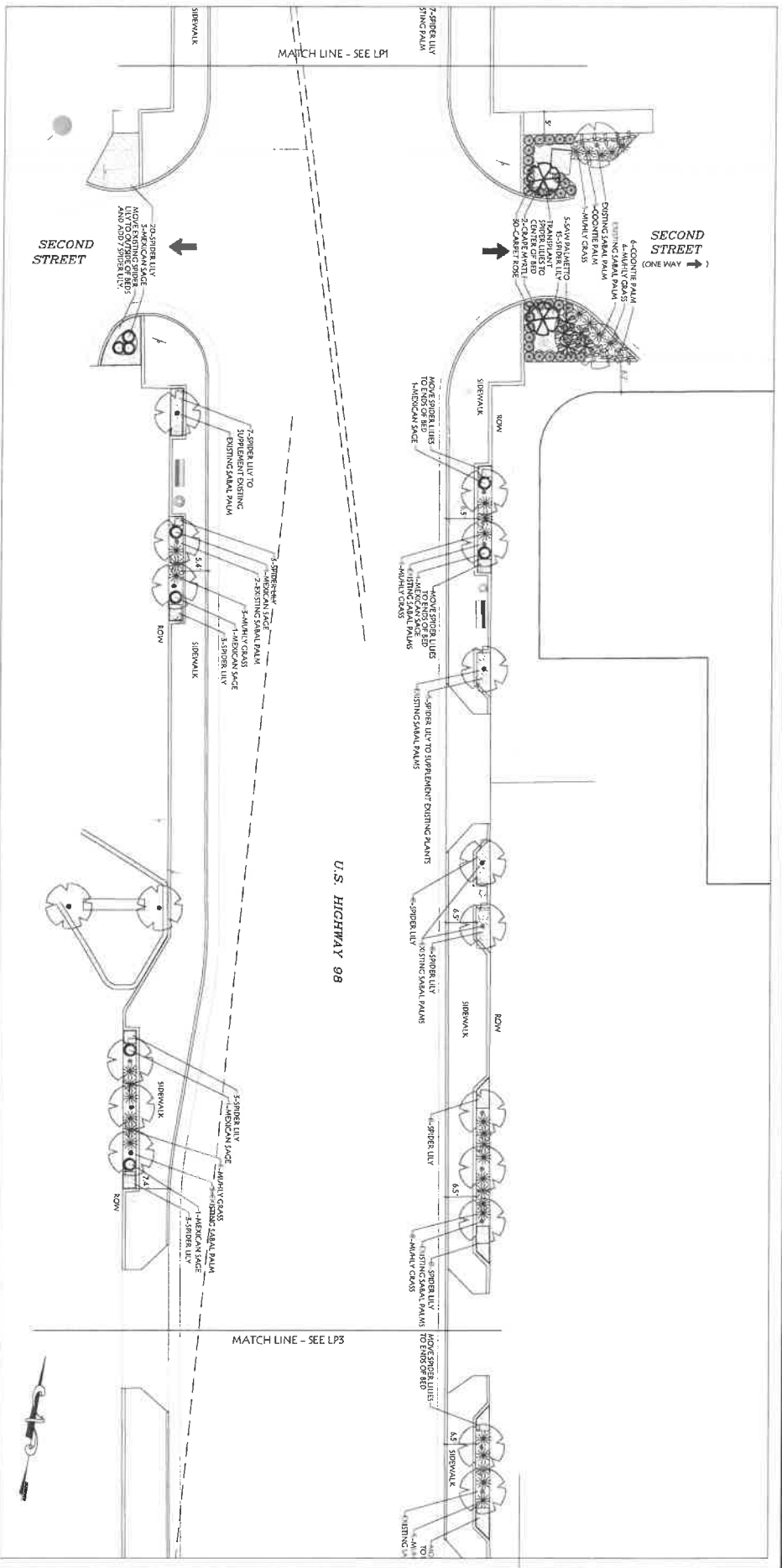
LP1

LANDSCAPE PLAN: HWY 98
CITY OF PORT ST. JOE, FLORIDA

Castrol Design & Landscape, Inc.
 1151 Industrial Blvd • Port St. Joe, Florida 32459
 Phone: (850) 229-8880

- PLANTING NOTES:**
1. LOCATE ALL UTILITIES BEFORE DIGGING. ALL UTILITY LOCATIONS MUST BE VERIFIED BY CONTRACTOR PRIOR TO WORK COMMENCING.
 2. THIS DRAWING IS DIAGNOSTIC AND SHALL BE USED FOR LANDSCAPING ONLY. FIELD ADJUSTMENTS MAY BE NECESSARY TO AVOID CONFLICTS WITH UTILITIES, STRUCTURES, AND VIEWS. NOTIFY THE LANDSCAPE ARCHITECT OF ANY NECESSARY ADJUSTMENTS.
 3. EXISTING (LIVING) TREES SHALL NOT BE DISTURBED.
 4. SITE SHALL BE PREPARED BY REMOVING EXISTING THE STUMP/ROOTS, WEEDS, AND ANY DEAD PLANT MATERIAL.
 5. NEW TREES SHALL BE STAKED. COLLAR STAKES FOR PALMS, CROSS STAKE 2x2 FOR OTHERS.
 6. HEALTHY SPACES LINES SHALL BE RETAINED OR TRANSFERRED AS NECESSARY. CONTRACTOR SHALL NOTIFY SUPPLEMENTAL QUANTITY NEEDED.
 7. ALL PLANT MATERIAL MUST BE FROZEN OR FRESH. PLANT MATERIAL SHALL BE PROVIDED BY FOOT FROM TO DESTROY.
 8. MULTIPLE TREES SHALL BE STAKED TOGETHER TO AVOID CONFLICTS WITH UTILITIES.
 9. CONTRACTOR SHALL MAINTAIN A CLEAN PROJECT SITE FOR THE DURATION OF THE PROJECT. UPON COMPLETION, ALL DEBRIS GENERATED FROM INSTALLATION SHALL BE REMOVED FROM SITE.
 10. CONTRACTOR SHALL REMOVE A ONE YEAR WARRANTY ON ALL NEW PLANT MATERIAL.
 11. CONTRACTOR SHALL MEET WITH CITY REPRESENTATIVE ON PROJECT THAT PROCEED FROM TO COMPLETION.
 12. GRASS WAREHOUSE SHALL BE MAINTAINED TO NOT BLOCK SIGNAGE AND TRAFFIC TRAVEL. No vegetation within the horizontal distance as defined by the street way or clear zone over than 14 feet or lower than 4 feet over sidewalks and curbs and other clear zones. No vegetation within the horizontal distance as defined by the standard.

- IRRIGATION NOTES:** Irrigation system has been designed per the attached schedule.
1. LOCATE ALL UTILITIES BEFORE DIGGING. ALL UTILITY LOCATIONS MUST BE VERIFIED BY CONTRACTOR PRIOR TO WORK COMMENCING.
 2. INSTALLATION PROPOSAL SHALL BE BASED ON THE ASSUMPTION THAT EXISTING SURVEY LINES AND STAKES ARE CORRECT. PRIOR TO WORK COMMENCING, VERIFY PROPOSED IRRIGATION SYSTEM INCLUDING MAIN LINE AND DISTRIBUTION LINES FOR INTEREST AND WORKING CONDITION. REPORT FINDINGS TO CITY PRIOR TO STARTING WORK.
 3. ALL IRRIGATION SHALL BE DESIGNED TO THE EXISTING DRAINAGE SYSTEM.
 4. ALL EXISTING IRRIGATION CONTROLS SHALL BE REPLACED WITH NEWER, PRESSURE VALVES (MODEL F03).
 5. PROPOSED IRRIGATION SHALL INCLUDE ALL OVERSIGHT, TUBING, AND REDUCED/ADJUSTED TO PROVIDE CORRECT IRRIGATION COVERAGE TO ALL NEW AND EXISTING PLANTS WITHIN THE PROJECT AREA.
 6. WIRELESS RAIN SENSORS AND FREEZE SENSORS SHALL BE INSTALLED ON ALL WIRELESS VALVES FOR THE IRRIGATION SYSTEM. IN ADDITION TO THE RAIN & FREEZE SENSORS, WIRELESS WIND GAUGE SHALL BE INSTALLED IN NEW AREAS THAT IS NOT OVER IRRIGATION OR SUBSEQUENT.
 7. ALL NON-FUNCTIONING AND OLD IRRIGATION MATERIAL SHALL BE REMOVED FROM BIDS.
 8. THE CITY OF PORT ST. JOE SHALL SUPPLY WATERS SOURCE FOR THE IRRIGATION (IN NO CASE TO CONTRACTOR AND ALSO LOCATE EXISTING MAIN LINES).



DATE: 1.30.2024
 REVISION DATE: 2.28.2024
 REVISION DATE: 8.24.2024
 SCALE: 1"=40'

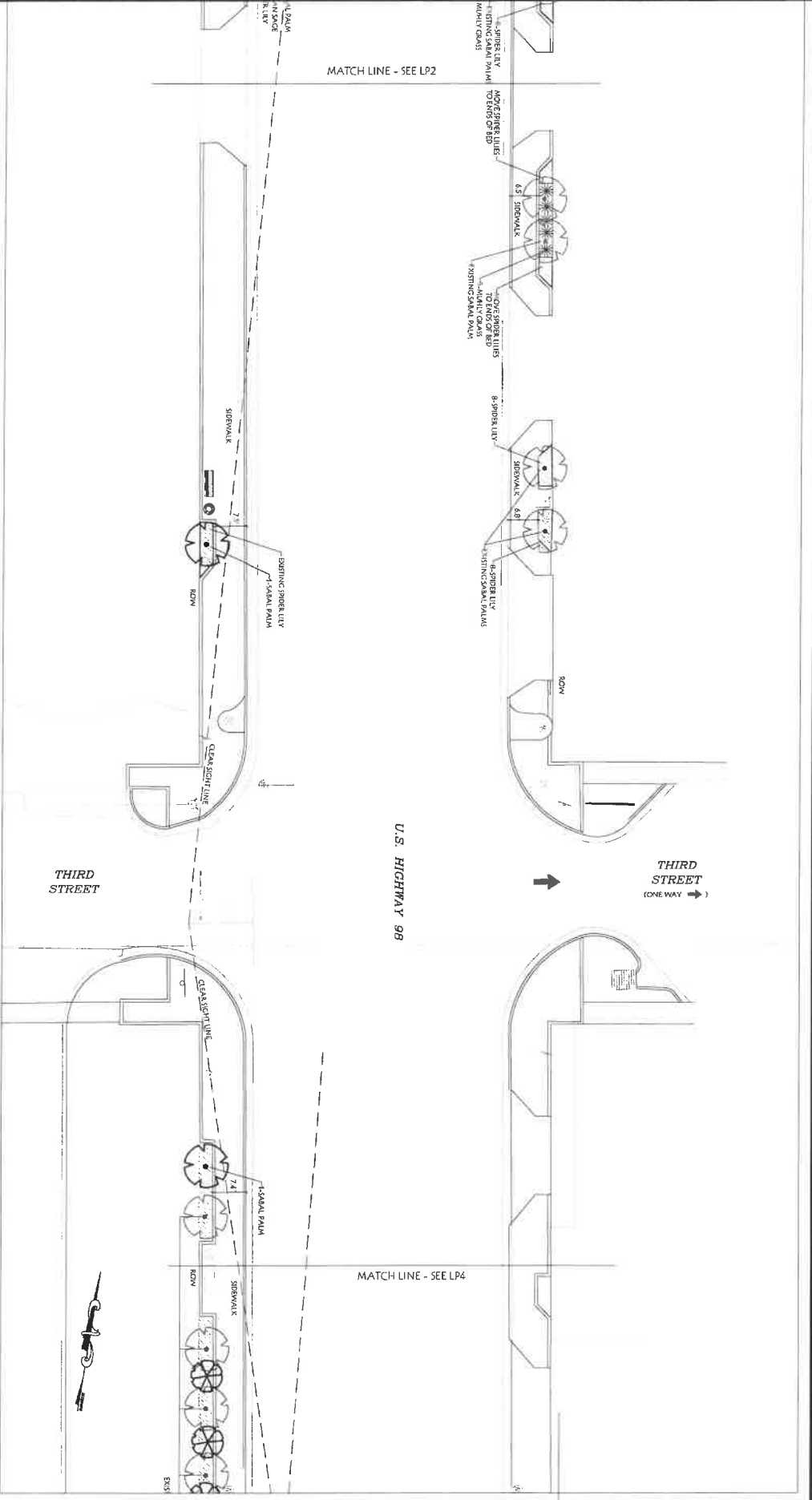


LANDSCAPE PLAN: HWY 98
 CITY OF PORT ST. JOE, FLORIDA

Coastal Design & Landscape, Inc.
 1151 Industrial Road • Port St. Joe, Florida 32456
 Phone: (850) 252-8800

LP2

SHEET #



DATE: 1.30.2024
 REVISION DATE: 7.28.2024
 REVISION DATE: 8.24.2024
 SCALE: 1"=40'

LANDSCAPE PLAN: HWY 98
 CITY OF PORT ST. JOE, FLORIDA

Coastal Design & Landscape, Inc.
 1151 Industrial Road • Port St. Joe, Florida 32456
 Phone (850) 232-8800

LP3

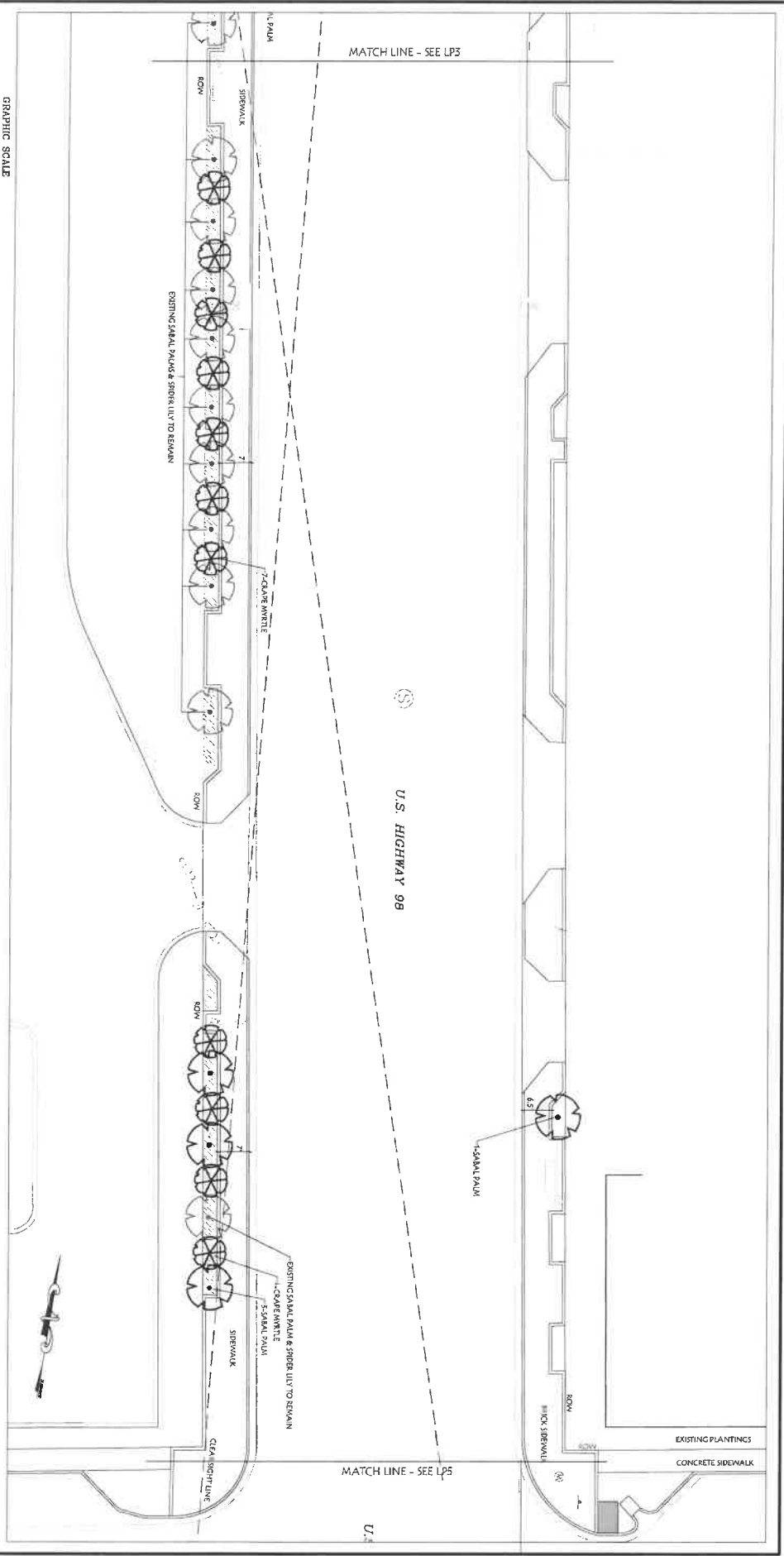
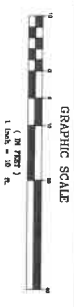
SHEET #

SHEET #
LP4
 DATE: 2-28-2024
 REVISION DATE: 7-26-2024
 REVISION DATE: 8-21-2024
 SCALE: 1"=40'



LANDSCAPE PLAN: HWY 98
CITY OF PORT ST. JOE, FLORIDA

Coastal Design & Landscape, Inc.
 1151 Industrial Road • Port St. Joe, Florida 3246
 Phone: (850) 294-8899



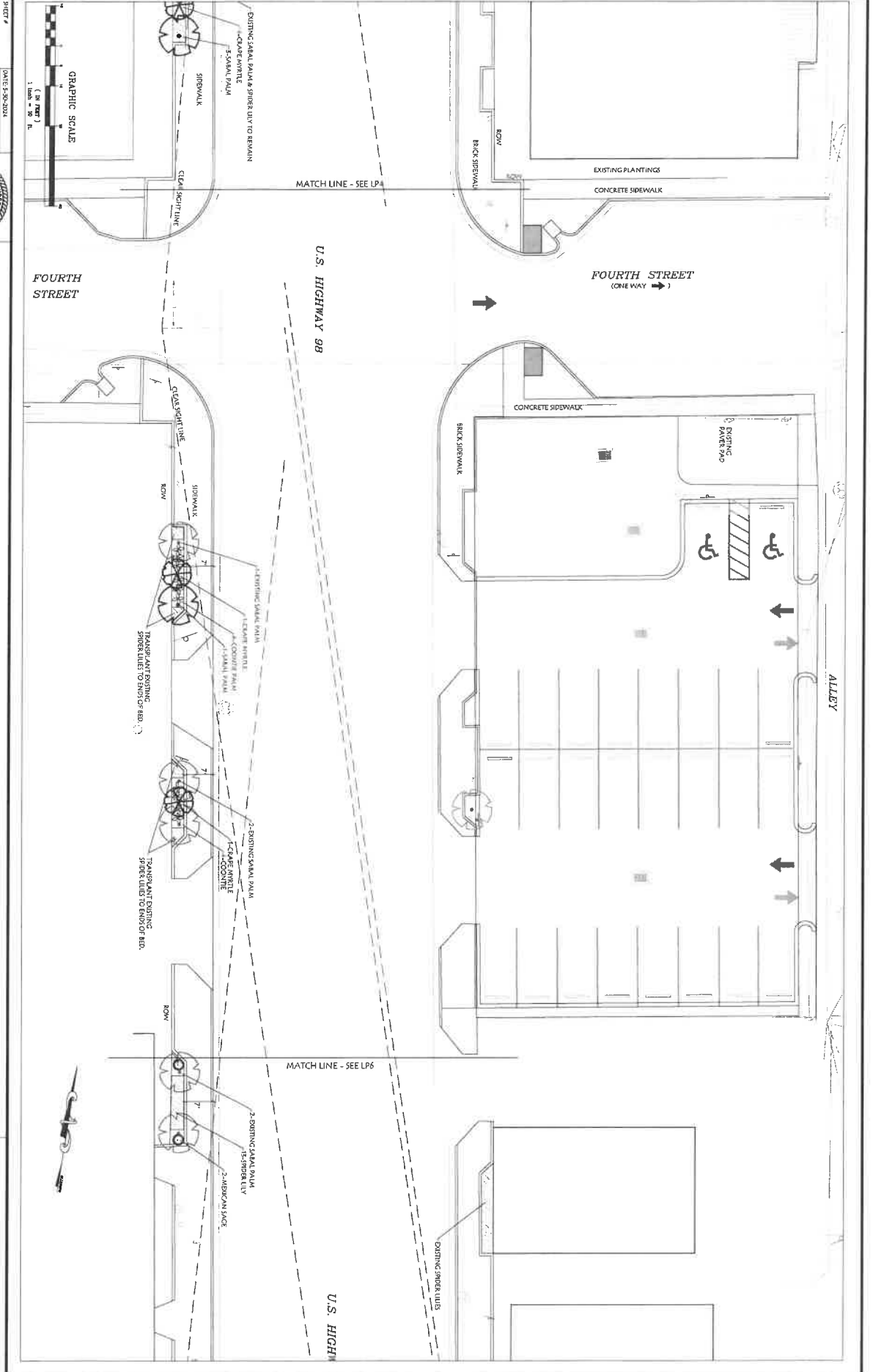
LP5

DATE: 2-20-2014
DESIGN DATE: 1-28-2014
REVISION DATE: 2-23-2014
SCALE: 1"=40'



LANDSCAPE PLAN: HWY 98
CITY OF PORT ST. JOE, FLORIDA

Coastal Design & Landscape, Inc.
1151 Industrial Road, Port St. Joe, Florida 32456
Phone: (850) 320-8880



SHEET #
LP6
 PROJECT DATE: 2/24/2014
 REVISION DATE: 4/21/2014
 SCALE: 1"=30'


LANDSCAPE PLAN: HWY 98
CITY OF PORT ST. JOE, FLORIDA

Coastal Design & Landscape, Inc.
 1151 Industrial Road • Port St. Joe, Florida 32466
 phone: (850) 239-8880

